

YEAR 1

ME, MYSELF & I

Driver Subjects
Science
Art



LONDON

Driver Subjects
Geography
Design



ENGLISH

Writing about our families using full stops, capital letters and finger spaces.
Writing simple sentences about where we are from and what we like: Personal fact files/ Passports focusing on applying phonics in spelling.
Fact files about landmarks using adjectives.
Leaflets about landmarks using adjectives and conjunctions.
Read text aloud to a group/ Orally say what they will write before writing the sentence.
Act out scenes from a story - Beegu - Write storyboards/ speech bubbles for a character.

MATHS

Ordering, recognising numbers and counting forwards and backwards Number bonds to 10/20 and adding and subtracting to and from 20
Counting in 2s, 5s, 10s
Recognise 2D and 3D shapes
Given a number, identify one more and one less. Identify and represent numbers using objects and pictorial representations including the number line, and use the language of: equal to, more than, less than (fewer), most, least. Read and write numbers from 1 to 20 in numerals and words.

SCIENCE

The Human body—Labelling parts of the body, labelling vital organs.
Senses—Identifying senses and what we use them for.
Life cycles of humans and animals.
Seasonal changes.

HISTORY

Changes within living memory.
Compare past and present London.
Discuss comparisons to themselves now and when they were a baby.
Identify events beyond living memory looking at the history of London and the Royal Family.

GEOGRAPHY

Name, locate and identify characteristics of the four countries and capital cities of the United Kingdom and its surrounding seas.
Understand geographical similarities and differences through studying the human and physical geography of a small area of the United Kingdom.

R.E

What makes me special?
What special places do people have in their homes?
Why is Friday night special in a Jewish home?
What Hindu customs help brothers and sisters show they care for each other
How does the Bible help Christian families to forgive?

COMPUTING

Use a search engine to research London Landmarks.

PSHE/RSE

Trauma Informed Schools - Recovery curriculum.
Recognising feelings, are there bad emotions?

P.E

Spatial awareness
Gymnastics, fundamental movement skills

MUSIC

Exploring pulse and rhythm.

M.F.L

Spanish

ART & DESIGN

Painting – self-portraits and looking at different artists.
Painting – London skyline.
Junk Modelling - Making a model of a personal item/ Topic 2 - London landmark.

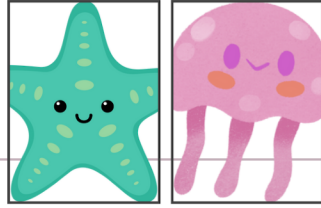
DESIGN & TECHNOLOGY

-

YEAR 1

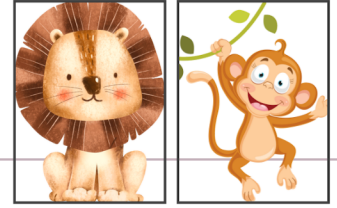
UNDER THE SEA

Driver Subjects
Science
Art



ON SAFARI

Driver Subjects
Geography



ENGLISH

Identify features of a diary from Dougal's Deep Sea Dive.
Identify the past tense Sequence events in chronological order from a story.
Write in the first person in your own diary.
Write in the past tense.
Use a checklist to self-assess.
Use drama to pretend to be an African animal and model verbs of movement.

MATHS

Solve one-step problems involving multiplication and division.
Sequence events in chronological order using language.
Recognise and use language relating to dates, including days of the week, months and years.
Tell the time to the hour and half past the hour and draw the hands on a clock face to show these times.
Recognise and name common 2-D and 3-D shapes.
Read, write and interpret mathematical statements involving addition (+), subtraction (-) and equals (=) signs

SCIENCE

Distinguish between an object and the material from which it is made.
Identify and name a variety of everyday materials, including wood, plastic, glass, metal, water, and rock.
Describe the simple physical properties of a variety of everyday materials.

HISTORY

Create a fact file on Mary Seacole and her time as a nurse in the Crimean war.

GEOGRAPHY

Name and locate the world's 7 continents and 5 oceans.

Use world maps, atlases and globes to identify the United Kingdom and its countries, as well as the countries, continents and oceans

R.E

How do religious people show they belong?
What is Sikhism?
How do children show they belong to Sikhism?
Why do Sikhs tell the story of Guru Nanak bathing in the river?
What did Guru Gobind Singh ask Sikhs to look like? What is the Amrit ceremony?

COMPUTING

-

PSHE/RSE

Understanding negative feelings.
Being yourself.
Celebrating differences.

P.E

Participate in team games, developing simple tactics for attacking and defending.
Perform dances using simple movement patterns.

MUSIC

Compose rhythms using sea creatures and sing songs and rhymes related to their topic. Explore pitch and learn to play on selected chime bars. Explore dynamics and tempo. Explore notation by reading and composing using Kodaly rhythm sticks.

M.F.L

Spanish

ART & DESIGN

Use painting methods to make traditional African prints.
Use ink to paint a savannah landscape and create shadows of animals.
Create an underwater sea creature from junk modelling materials.

DESIGN & TECHNOLOGY

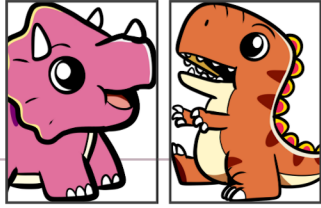
-

YEAR 1

DINOSAUR WALKING

Driver Subjects

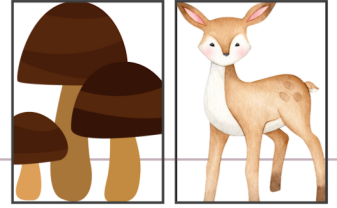
- Geography
- Science
- History



INTO THE WOODS

Driver Subjects

- Art & Design
- Science



ENGLISH

Generate adjectives to describe and compare and contrast dinosaurs.

Use different sentence types to write facts about dinosaurs.

Make a prediction based on what's already been read.

Use adjectives to describe foods and write a menu for a carnivore, herbivore and omnivore.

Participate in role play to recreate a scene from a traditional tale.

Write dinosaur poems using verbs and adverbs.

Make repeated phrases using verbs.

Write a shape poem about a dinosaur using adjectives

MATHS

Describe position, direction and movements, including whole, half, quarter and three-quarter turns.

Recognise and know the value of different denominations of coins and notes.

Tell the time to the hour and half past the hour and draw the hands on a clock face to show these times.

Recognise, find and name a half as 1 of 2 equal parts of an object, shape or quantity.

Recognise, find and name a quarter as 1 of 4 equal parts of an object, shape or quantity.

SCIENCE

Identify and classify mammals using their observations and ideas to suggest answers to questions.

Identify and name a variety of common wild and garden plants, including deciduous and evergreen trees Identify and describe the basic structure of a variety of common flowering plants, including trees

HISTORY

Identify activists such as Rosa Parks, Martin Luther King and compare aspects of life in different periods.

GEOGRAPHY

Identify seasonal and daily weather patterns in the United Kingdom and the location of hot and cold areas of the world in relation to the Equator and the North and South Poles.

R.E

What makes a community?

Who was Muhammad?

Which objects are special for Muslims

How do Muslims show they belong to Islam?

What celebrations do Muslims take part in?

What does it mean to be a Muslim?

COMPUTING

-

PSHE/RSE

Internet safety

Healthy eating and healthy living

P.E

Master basic movements including running, jumping, throwing and catching, as well as developing balance, agility and co-ordination, and begin to apply these in a range of activities.

MUSIC

Exploring pulse, rhythm, pitch, duration and phrasing through weekly singing assemblies.

M.F.L

Spanish

ART & DESIGN

Use modelling to make salt dough dinosaur bones.

Design a house for Hansel and Gretel and create this house through collage and junk modelling.

Create puppets to recreate a story Use sketching techniques to design scenery or a set.

DESIGN & TECHNOLOGY

-